

## PAN S

ZPA806

Termostatico incasso doccia con deviatore 2/3 vie. / Built-in thermostatic shower mixer, 2/3 way diverter.



Termostatico incasso doccia da 3/4" e deviatore a 2/3 vie con apertura/chiusura acqua. Installazione possibile sia in verticale che in orizzontale.

3/4" built-in thermostatic shower mixer and 2/3 way diverter with water on/off function. Both vertical and horizontal installation possible.

R96734

Parte incasso, deviatore a 2 vie. / Built-in part,  
2 way diverter



R96735

Parte incasso, deviatore a 3 vie. / Built-in part,  
3 way diverter.



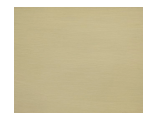
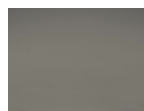
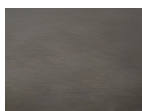
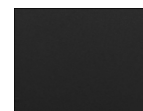
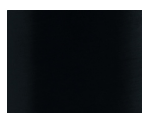
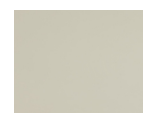
## PAN S

ZPA806

### Finiture / Finishes



Cromo / Chrome

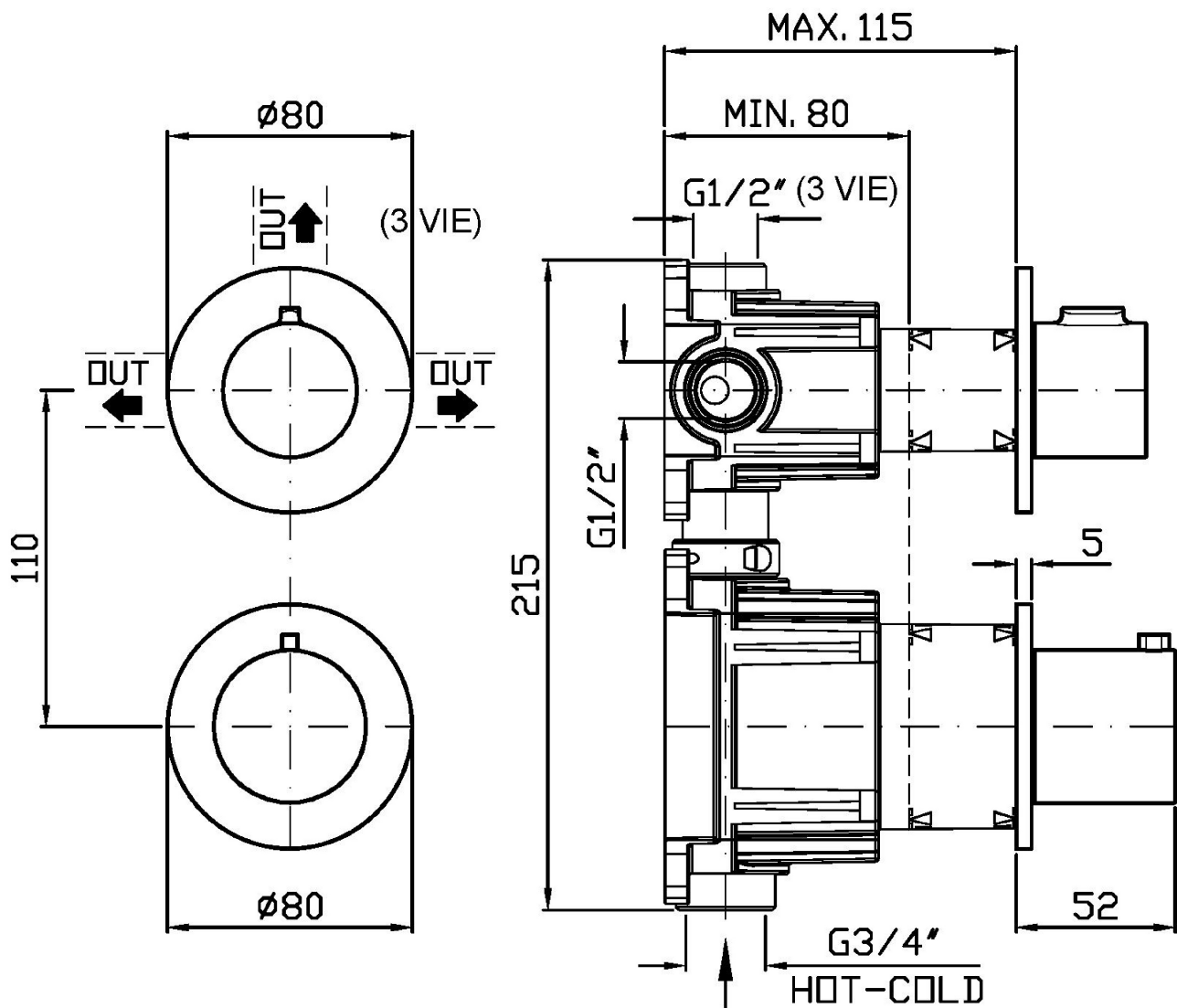
C3  
Nickel Spazzolato / Brushed  
NickelC8  
Nickel Lucido / Polished NickelC40  
Oro / GoldC41  
Oro spazzolato / Brushed  
GoldC50  
Metal Black / Metal BlackC51  
Metal Black spazzolato /  
Brushed Metal BlackW1  
Bianco Opaco Goffrato /  
Embossed Matt WhiteN1  
Nero Opaco Goffrato /  
Embossed Matt BlackN6  
Nero opaco / Matt blackP21  
PVD brushed chocolate / PVD  
brushed chocolateP31  
Brushed PVD British gold /  
Brushed PVD British goldP81  
Brushed total black PVD /  
Brushed total black PVDP91  
Brushed PVD Copper /  
Brushed PVD CopperJ3  
Glossy gesso / Glossy gessoK7  
Pearl cipria / Pearl cipriaR6  
Pearl chili / Pearl chiliV7  
Pearl salvia / Pearl salviaV8  
Matt mirto / Matt mirto

### Note / Notes

## PAN S

ZPA806

Disegno Complessivo / Overall Drawing

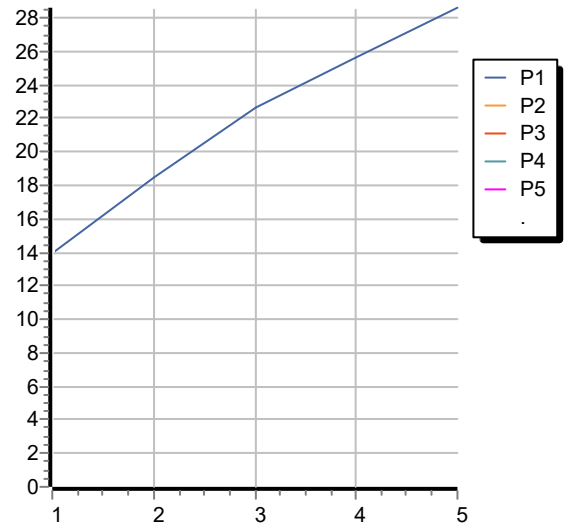


## PAN S

ZPA806

Portate / Flowrates (lt/min)

PRESSIONE PRESSURE	1 BAR	2 BAR	3 BAR	4 BAR	5 BAR
DEVIATORE <i>P1</i>	14	18,5	22,6	25,6	28,6
<i>P2</i>					
<i>P3</i>					
<i>P4</i>					
<i>P5</i>					



## PAN S

ZPA806

Pesi e Misure / Weights and Sizes

Peso ( Kg ) Weight ( lb )	1,45 ( Kg )	3,20 ( lb )
Volume test ( dc3 ) - ( in3 )	7,50 ( dc3 )	457,68 ( in3 )
h ( mm ) - ( in )	90,00 ( mm )	3,54 ( in )
L1 ( mm ) - ( in )	250,00 ( mm )	9,84 ( in )
L2 ( mm ) - ( in )	333,00 ( mm )	13,11 ( in )

